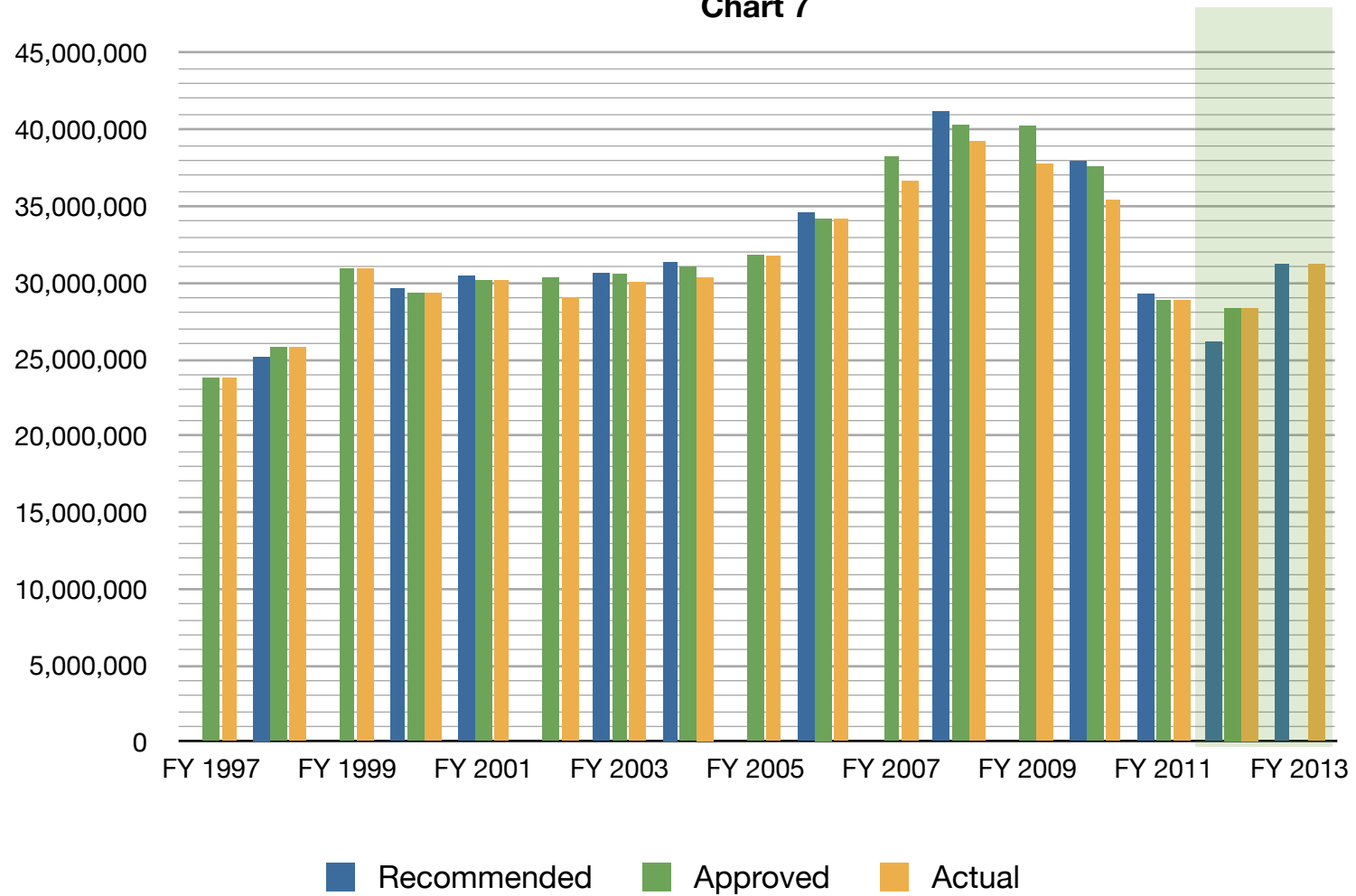


MCPL Operating Budget Year-By-Year Comparison

MCPL OPERATING BUDGETS

FY 1997-FY 2012

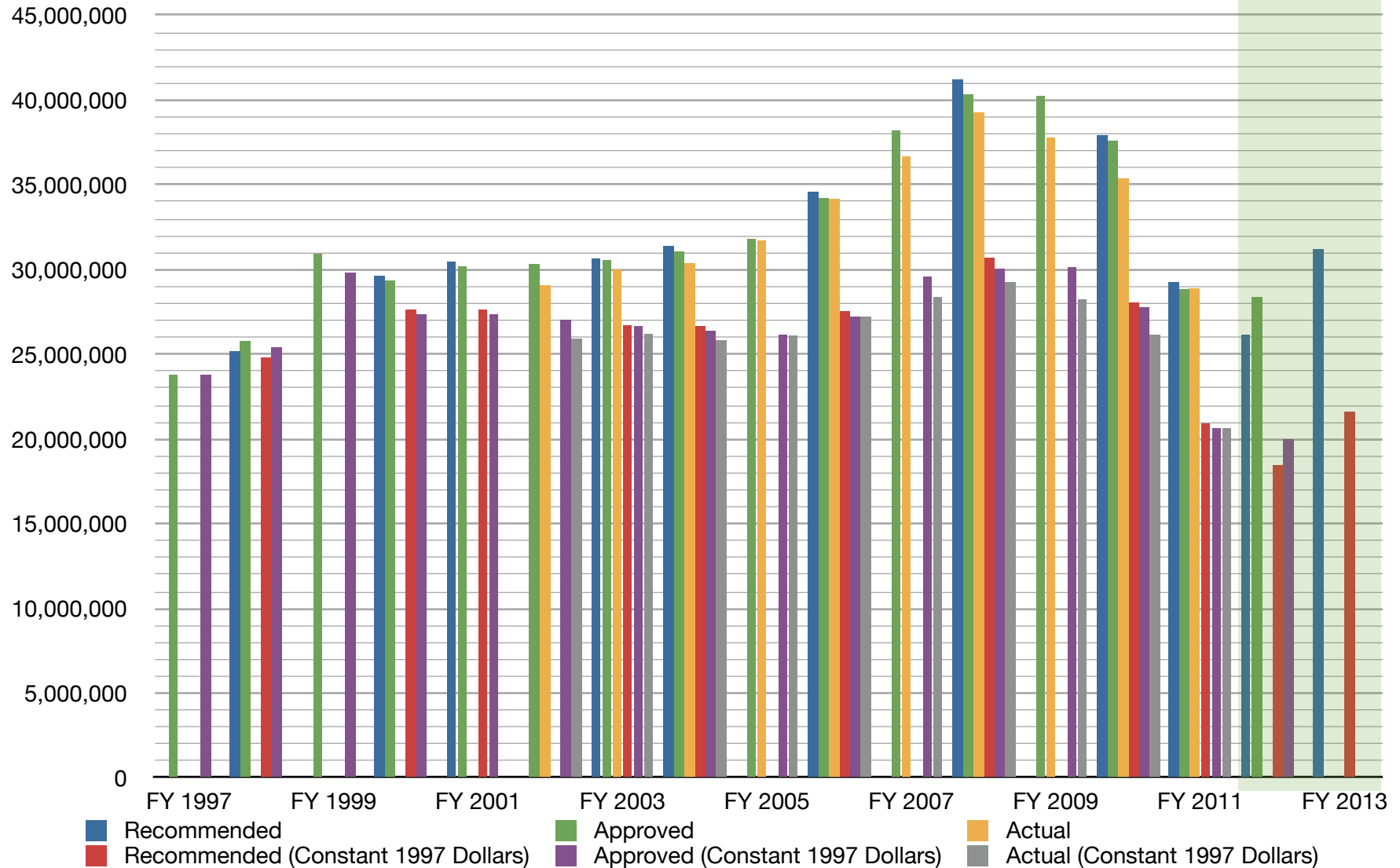
Chart 7



FY 1997 through FY2001, FY 2012 Approved Budget assumed equal to Actual Budget
 FY 2013 uses Recommended Budget

MCPL Operating Budget Year-By-Year Comparison

MCPL Budget in Constant Dollars FY 1997 through FY 2013

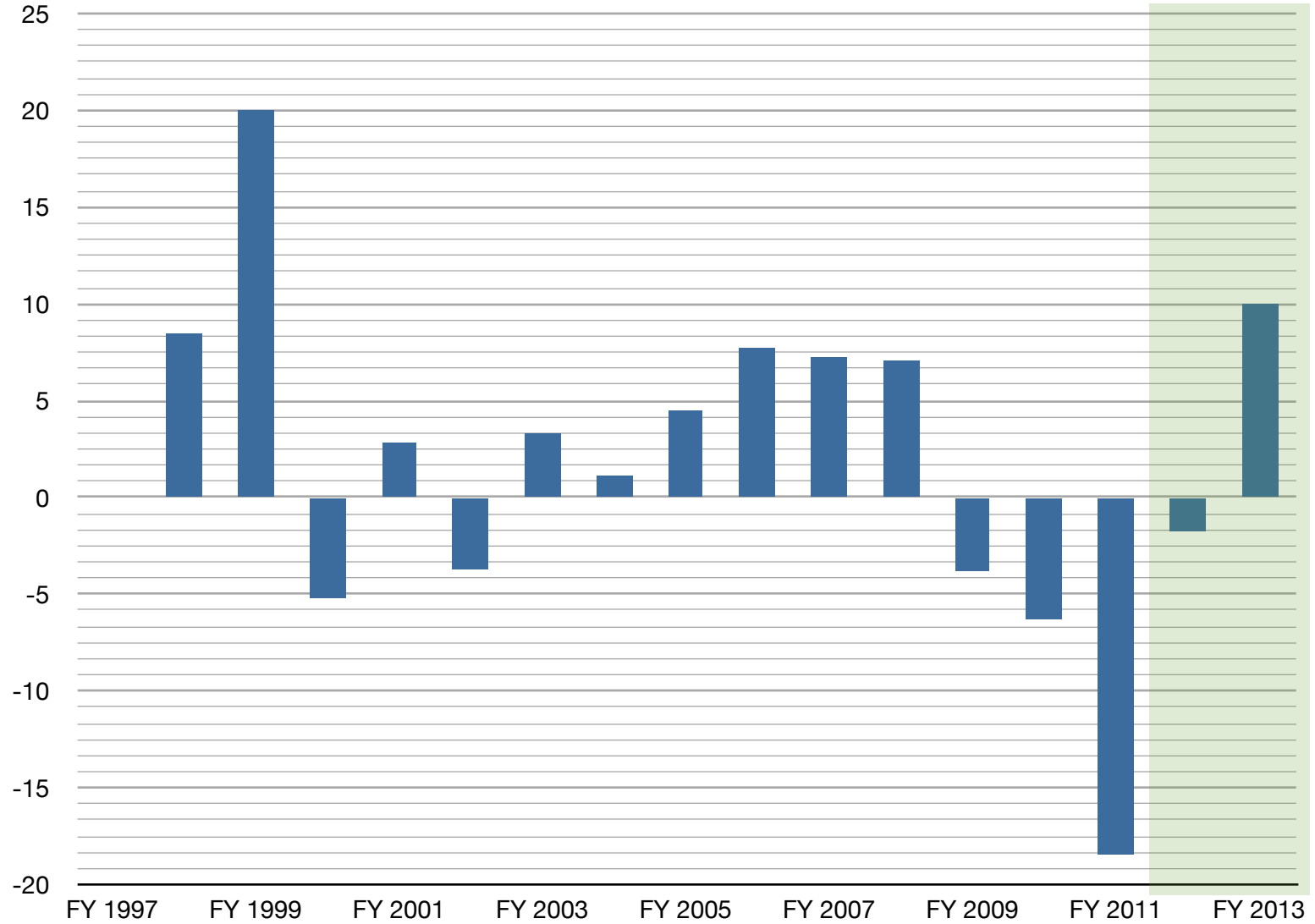


Constant dollars calculated from United States Consumer Price Index Website:

<http://data.bls.gov/cgi-bin/cpicalc.pl?cost1=100.00&year1=1997&year2=2012>

MCPL Operating Budget Year-By-Year Comparison

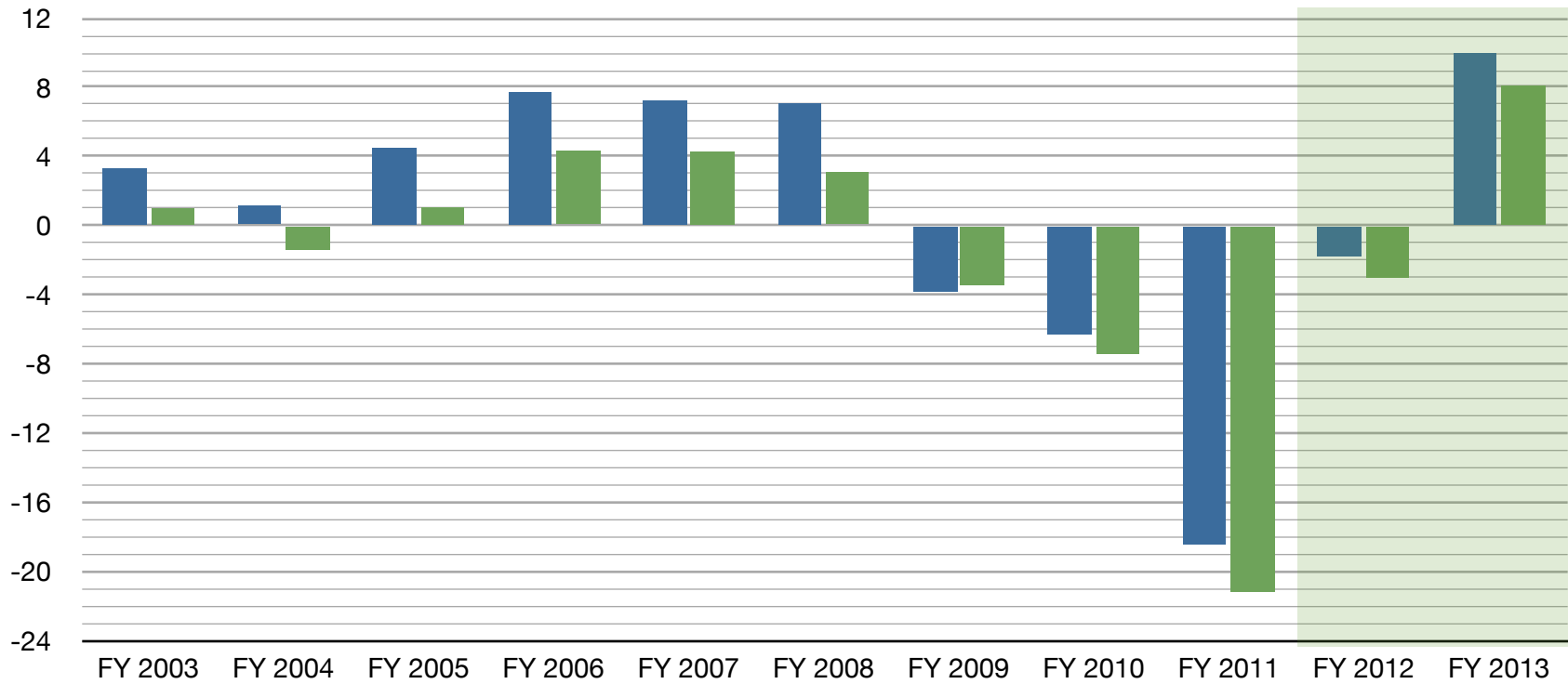
Annual Percentage Change MCPL Operating Budget FY1997 through FY2013



FY 1997 through FY2001, FY 2012 Approved Budget assumed equal to Actual Budget
FY 2013 uses Recommended Budget

MCPL Operating Budget Year-By-Year Comparison

Annual MCPL Percent Change FY 2003 through FY 2013



■ % Change Actual
■ % Change Actual (Constant 1997 Dollars)

FY 2012 "Actual Budget" is estimated
 FY 2013 shows Executive's Recommended Budget

Constant dollars calculated from United States Consumer Price Index Website:
<http://data.bls.gov/cgi-bin/cpicalc.pl?cost1=100.00&year1=1997&year2=2012>